

SHALFORD

Village Magazine October 2025

*showcasing our community
Produced by the People for the People*

ENQUIRIES & ADVERTISING:

Email: shalford_village_magazine@btinternet.com



“All of this work has been undertaken for free by everyone here

**I’m proud to be part of a community
Which can get things done when
we come together!!”**

Andrew Hull - Page 20

DANIEL ROBINSON & SONS

INDEPENDENT FAMILY FUNERAL DIRECTORS

- ♦ Fully trained & qualified staff
- ♦ Prepaid funeral planning
- ♦ Lady & gentleman conductors
- ♦ Warm & welcoming funeral homes with Chapels of Rest
- ♦ Limousines, horse-drawn carriages & bespoke vehicles
- ♦ Full range of memorials in fine stone



Traditional & contemporary funerals, as unique as the lives celebrated

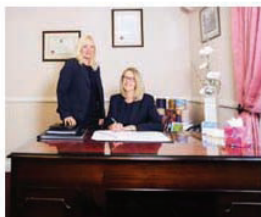
always here when you need us...

31 High Street ~ **Halstead**
01787 475533

7 Manor Street ~ **Braintree**
01376 320582

Haslers Lane ~ **Great Dunmow**
01371 874518

www.drobinson.co.uk



IAN HOLMES

Water Softener Services

TOUCANTM
WATER SOFTENERS



Suppliers & Installers of DOMEXTRA & TOUCAN Water Softeners

• Service & Repair • Filters • Taps • Salt Tablets

We are a family run business, established in 1994 by Ian & Alicia Holmes.

Our Director, Ian Holmes, has been working in the
Water Softening industry for over 30 years.

Tel: 01371 810406 E-mail: iholmeswss@aol.com

www.ianholmeswatersofteners.co.uk

Page No. INDEX

- 4 What's On
- 17 Essex Bridleways Association – Mandy French
- 18 Thank You Essex Board & Timber
- 19 Local Organisations & Charities
- 20 Shalford Village Hall Car Park Extension – Andrew Hull
- 20 Welcome Russell – Alice Cox
- 21 Meet & Greet – Friday 5th September 2025
- 22 Bendlowe's 5th Trip To The Hut – Marianna Marriott
- 24 Shalford Horticultural Show – 13th September 2025
- 26 Shalford Bell Ringers – Marianna Marriott
- 27 Tractor Run – Mac Beanland
- 29 Paul Pilgrim 1967-2025 – Terry Savage
- 30 Condolences Paul Pilgrim
- 31 The Gorgeous George, In Memory Of Paul Pilgrim – Graham Silvester
- 33 So You Think It's All Over – The Theoretical Gardener
- 34 Wethersfield Fire Station Open Day – Sally Welsh
- 35 Crossword 90 – Robert Burrows
- 36 Buzzing News From The Hives Of Gill Powell
- 39 From The Vicarage – Rev'd/Fr Alex
- 40 Pant Valley Church Services for October
- 41 Church Warden's Report – Hilary Penney
- 42 Contacts for Shalford Church of St Andrew's
- 42 Stay On Top Of Your Health – Essex Libraries
- 44 Life & Work Abroad – Didi Crook
- 45 Mobile Library Dates & Times
- 45 Remembrance – Alice Cox
- 46 Mototaxi Junket - Andrew Hull
- 50 The Hundred Parishes – Ken McDonald
- 52 Fun Cooking Course – Braintree District Council
- 55 Do You Need: A Financial Planner Or Financial Advisor? – HarperLees
- 56 Post Office Information
- 56 Crossword 90 Solution – Robert Burrows
- 57 Braintree Dog Day – Braintree District Council
- 58 Autumn Crime Prevention – PCSO Terrie Johnson
- 60 Business Directory

Shalford Village Magazine is a non-profit organisation, run by volunteers and funded by advertising, the Parish Council, the Parochial Council, villagers, local organisations, and donations. Contact by email: shalford_village_magazine@btinternet.com
Shalford Village Magazine can be downloaded or viewed from www.bendlowe.co.uk

**KNOW WHERE
YOUR NEAREST
DEFIBRILLATOR
IS LOCATED**



Jaspers Green
CM7 5AU



Shalford Village
Hall Church End
CM7 5EZ



The George Inn The
Street CM7 5HH

FRONT COVER

**The Shalford
Village Hall Car
Park Team of
Workers**

WHAT'S ON



Booking Tel: 07732 313530
Between 9am to 5pm

www.shalfordvillagehall.co.uk

SHALFORD TENNIS CLUB

Membership

Annual Family of 4
Adult
Junior (U17 or full-
time Education
U20)

Casual Hire Cost

To book the court
and for further
information:

Contact: 07732
313530 Between
9am to 5pm



Please be respectful of
our Playing Fields and
Pick Up after your dog

Be considerate of
others especially
children and those with
impaired vision

SHALFORD FOOTBALL CLUB

Located at Shalford
Village Hall

For more information
visit:
<http://www.cfcshalford.co.uk>

PLAYING FIELDS

Football
Cricket
Tennis
Children's Playground
Pétanque

PETANQUE
(BOULES)
LOCATED AT
SHALFORD
VILLAGE HALL



No Need to Book

SHALFORD PARISH COUNCIL MONTHLY MEETING

EVERY THIRD
WEDNESDAY OF THE
MONTH
HELD AT SHALFORD
VILLAGE HALL
TIME: 7.30 p.m. to 9.30 p.m.

For more information [https://
shalford-esssex-pc.gov.uk](https://shalford-esssex-pc.gov.uk)

ART CLUB

Shalford Village Hall
Every Tuesday 11.00
to 13.00
Tel: 07505 282374

PILATES CLASS

Shalford Village Hall
Wednesday 9.15 am
& Thursday 7 pm
Tel: 07969 557845

Meet & Greet
every 1st Friday of
the month 11am to
2pm

Indoor Carpet Bowls
every Tuesday Contact
Vic 07773 707404

WHAT'S ON

TABLE TENNIS IN FINCHINGFIELD



The group comes to the village hall on Monday evenings to play table tennis 7.30 pm for 2 hours. If you would like to have a chat beforehand, please call me on 07775 531781 - Brian

COFFEE MORNING – ST ANDREW'S CHURCH

**EVERY 2nd & 4th
THURSDAY OF
THE MONTH**

**10.00 a.m. to 12.00
p.m.**



SINGING 4 ALL – LORRAINE PATIENT

This new singing group, which is held every Tuesday at Cornish Hall End Village Hall at 7.30 p.m. has become very popular. If you would like to try out this special group or join, please call 07775 531 781

SHALFORD ROADSIDE & CHURCH FISHING LAKES



are affiliated to Billericay & District Angling Club
The river Pant in Shalford is also covered by the Club
For further details contact:-
Fishery Officer: Derrick Marriott, or www.bdac.co.uk

WALKING GROUPS

From SHALFORD The George Pub every Wednesday at 10 a.m.
From FINCHINGFIELD Green every Friday at 10 a.m.

SHALFORD CRAFT GROUP

Meetings are held on the 3rd Wednesday of the month.

At 2pm onwards.

Please bring along any craft projects you are working on.

Share ideas and learn new crafts.

Chat and craft over tea/ coffee and cake.

For dates of when and where please contact.

**Caroline Ottley
07734140478**

**Marianna Marriott
07450251525**

JOIN OUR FRIENDLY GROUP OF BELL RINGERS

**EVERY
MONDAY at
Wethersfield
Church, 7 p.m.
&**

**FRIDAY at
Shalford
Church, 7 p.m.**

**FOR MORE
DETAILS
CONTACT:**

**ROY
THREADGOLD
Tel: 01371
850481**

**LEARN TO
PLAY THE
DRUMS
AT YOUR
OWN PACE
IN A
FRIENDLY
ENVIRONMENT**

**CONTACT
JAMES
TEL: 07704
070498**



RE-ENGAGE (Formerly Contact the Elderly)

Arranging monthly get togethers over a cup of tea for the elderly



For more details:
Contact:

**Sarah Cunningham
Sarah8750@hotmail.co.uk**

Or

The Charity Website:
www.reengage.org.uk
Freephone: 0800 716543

WHAT'S ON

BENDLOWE'S EXTRA EVENTS – BEES!

Here are our plans for BEES for the next few months. These all take place on the third Friday of the month, 2 pm to 4 pm and will run at the Village Hall. We suggest a donation of £3 per activity to cover costs.



17 October British Sign Language

A chance to learn a few simple signs and sign along to a favourite song with Geraldine Spencer in a fun and relaxed atmosphere, followed by refreshments

21 November Line Dancing

Come and learn some basic line dancing steps and put them into a simple routine. Guaranteed fun with Marion with some well-deserved tea and cake to follow.



19 December Christmas film afternoon

Enjoy a festive classic (tbc) with a mince pie or two

Donations of cakes welcome at all events. For more information please contact Sally on 07785235000 or sallymwelsh@outlook.com



Finchingfield and District Branch

Remembrance Day 11 November

Service in church on Sunday 9th and on the green around the War Memorial on Tuesday 11th. As usual, our local schools will be putting on an Art Exhibition in the church during the week before Remembrance Sunday. The theme this year is "Life in the 1940s".

Branch AGM

Wednesday 19 November at 7.30 in Finchingfield Guildhall. **Please support your local branch by attending.**

Carol Service 6 December 3pm

This year we are again hosting a Carol Service on behalf of the "C" Group in Finchingfield Church. We warmly welcome all families to this service.

London Lights Trip

A trip to see the Christmas Lights is arranged for **Saturday 13 December**, leaving Finchingfield at 4 pm. Cost: £15 per person. **BOOK EARLY TO AVOID DISAPPOINTMENT.**

Contacts: Chairman: Ivan Fleming 07525 751179 isskhs@googlemail.com

Secretary: Janet Ridgewell 01371 810051 janet.ridgewell510@btinternet.com

WHAT'S ON WETHERSFIELD



SOUP AND CHAT



COME ALONG TO WETHERSFIELD'S
VILLAGE HALL FROM 12:00 TO 14:00 AND ENJOY
HOMEMADE SOUP WITH BREAD AND HOMEMADE CAKES

ON THE FOLLOWING TUESDAY DATES

28th October 2025
25th November 2025
27th January 2026

24th February 2026
24th March 2026
28th April 2026

This is a self-funding meeting relying on cash donations to cover costs. We rely on your generosity to ensure its continuity

This is an adult only event

WHAT'S ON WETHERSFIELD



12th DECEMBER 2025

**CHRISTMAS PARTY –
TICKET ONLY**

**WETHERSFIELD
PAVILION 13:00 – 16:00**

**BUFFET &
REFRESHMENTS**



This is a limited ticket only subsidised party. Tickets will cost £6.
Available from Russell Green Tel: **07518 269969**

WHAT'S ON - WETHERSFIELD CLUB

**(CAMRA North West Essex Club of the Year 2025
CAMRA East Anglia Regional Club of the Year 2024)**

**Wethersfield Club is now open 7 days a week - see below
for our new hours and details of what we have to offer
A great place to come for a pint or glass or two.**

WE ARE NOW OPEN ON THURSDAYS!!

MONDAY	5.00 - 11.00 PM
TUESDAY	5.00 - 11.00 PM Ladies night (gents welcome too!) Scrabble, chess, cribbage
WEDNESDAY	5.00 - 11.00 PM
THURSDAY	5.00 - 10.00 PM (free pool available all night)
FRIDAY	5.00 - 12.00 PM
SATURDAY	7.00 – 11.00 PM
SUNDAY	4.00 – 9.00 PM

**Newly refurbished pool table, recovered snooker table and
new dart boards available every evening we are open
(Event permitting)**

Follow our Facebook page for more details

WHAT'S ON - WETHERSFIELD CLUB

Come and join us through the rest of 2025!

Saturday 11 October

8.00 pm John Barker's legendary Bingo, big cash prizes!

Thursday 16 October

7.00 pm Austin and Bob present their fabulous karaoke night, join us for a song or two!

Saturday 25 October

7.00 pm Live Music with our good friends The Beer Valley Drifters from
8.00 pm

Saturday 1 November

7.30 pm Quiz night with Stella

Sunday 2 November

3.00 pm Sunday afternoon Live Vinyl session with Tim Harris, bring down your LPs and reminisce

Saturday 29 November

4.00 pm Christmas Light Switch On, starting in the Hall with BBQ, Bar, Stalls, a visit from Santa and Raffle

7.00 pm Live music with Take Cover at the Club

Thursday 11 December

7.00 pm Christmas karaoke evening with Austin and Bob, to get us into the festive spirit

New Year's Eve Members free entry

7.00 pm–1.00 am Local singer Loran, will be entertaining us for the evening, come and party the night away as she helps us see in 2026

WHAT'S ON



FOSTAC

Friends of St Andrew's Church

President

Sir Roger Singleton OBE

THROUGH THE GREEN BAIZE DOOR

Talk by Bryan Thurlow

Retired butler, George Barrington, looks back with nostalgia on the many years he spent in service at a grand Yorkshire house. Born in 1856 he remembers starting there as a boy and working his way up through the ranks to becoming Butler



Friday 10th October 2025—7.00pm
St Andrew's Church, Shalford CM7 5HH

Tickets £5
Available from Shalford Village Stores

www.fostac.co.uk

Affiliated to Charity No 249505

WHAT'S ON

GUILDHALL

FINCHINGFIELD ESSEX

Finchingfield Guildhall
presents
a performance by SW'ukes
on Friday, 3rd October at 7.00 pm
Tickets £7.50

Please go to: finchingfieldguildhall.org.uk "what's on"
page for further information and payment.



SW'ukes are a Saffron Walden-based ukulele group. They play big songs on little instruments, and no good song is spared from their attempts to play it! Although most of the repertoire is 60's and 70's popular songs, they strum out a mean Depeche Mode, Miley Cyrus, and David Bowie. They encourage people to sing along, and if you'd like to bring your ukulele along, SW'ukes do a couple of audience participation numbers. "If everyone played ukulele the world would be a happier place!"

SATURDAY, 8th NOVEMBER 7 p.m.

WETHERSFIELD VILLAGE HALL



CREAMER FUND AUTUMN CONCERT

With songs from throughout the decades

Cash Bar and Raffle

Tickets £10 available from Kay Painter Mobile: 07787 388069.

Email: Kay.f.painter@btinternet.com.

All money raised is in aid of the CREAMER Fund





DUNMOW
THEATRE
COMPANY

Champagne AND Show Tunes

Join us for an evening of music from Broadway to the West End, performed by a selection of Dunmow Theatre Company vocalists, accompanied by a live pianist.

Enjoy a welcome glass of Blanc de Blancs Champagne on arrival, the perfect prelude to a night of song and unforgettable performances.

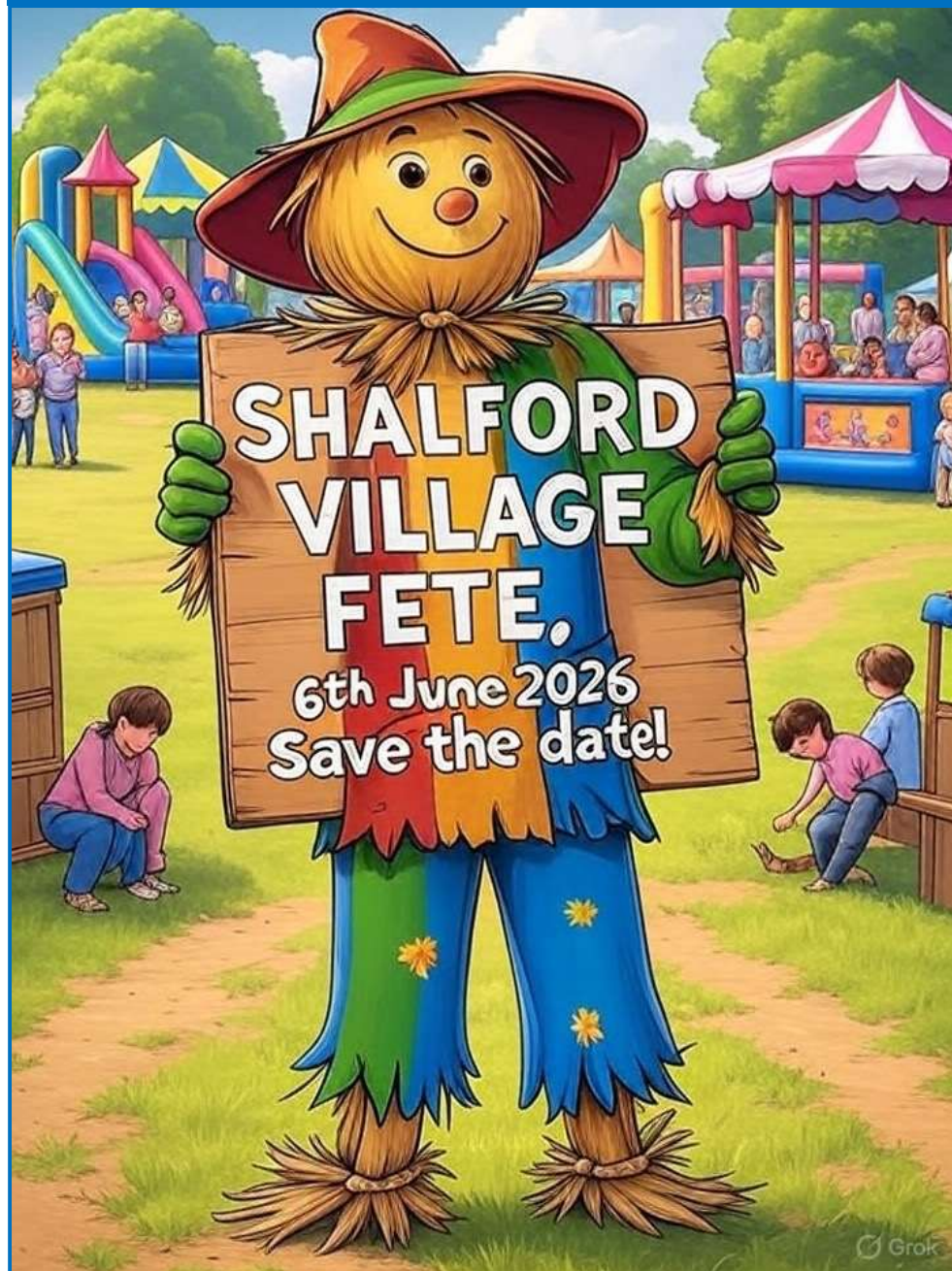
Friday 17th October 7pm-11pm

Luckins Wine Store
9 Market Place
Great Dunmow
CM6 1AX

www.ticketsource.co.uk/dunmowtheatre



SAVE THE DATE





www.unitfourmotors.co.uk

07834 359313 / 01371 502 404

info@unitfourmotors.co.uk

Servicing & Oil changes

Brakes & Clutches

Breakdown & Recovery

Fault Finding & Diagnostics

Tyres & 4 Wheel Alignment

MOT's (by appt only)

MOT Failures

Air Conditioning

Welding Repairs

Batteries



@unit4motorsltd



@unit4motorsltd

Unit 4, Gainsford Hall, Toppesfield, Essex CO9 4EJ



///wonderful.tinsel.plates

what3words



RIDGEWELL
COMMUNITY
CHAPEL

Bringing Living Water to Serve The Community

AUTUMN HOLIDAY HALF TERM CLUB



GO MAKE A DIFFERENCE



Wednesday 29th October

10am - 1pm

**FIIN, FUN, GAMES,
CRAFT & SONGS**

for 5-11year olds



to book....

Phone: 07396 746674

email: ridgewellchapel@gmail.com

ESSEX BRIDLEWAYS ASSOCIATION

The Essex Bridleways Association is a registered charity formed in 1979 to enable horse riders, walkers and countryside users in Essex to:

- Preserve and maintain existing bridleways.
- Restore rights of way that may have been lost through incorrect classification and are not registered on the Definitive Map.
- Create new bridleways.

Benefits of Membership.

- Reduced entry fees on all EBA rides
- Priority entry to some rides
- Update magazine twice a year.
- Email notice of news and events
- Ride with a guide scheme
- Discounts on BHS membership and new insurance policies with SEIB
- Helping to ensure that off road access to our stunning Essex countryside is not lost to us and future riders.

Our policy regarding the requirement for flu vaccinations for 2025 is that all horses attending our rides and holidays must be up-to-date with their annual flu injections (i.e. the last booster is no more than a year old). On top of this we will implement any extra stipulations that our host may request (ie. passports check, 6-month booster etc.). We will not know what these extra requirements are (if any) until we open each ride for entries. We will also be following the new rules which are now in place for horses having new or restarted vaccines from 01.01.24 and any equine must not attend our events within 7 days of receiving any vaccination including boosters. Please speak to your vet if you require any further information or clarification.

Events 2025

AGM

This year's AGM will be held on the **13th November 2025** at Keen Hall, Chelmsford. CM2 8PT.

7pm for 7.30pm start. Raffle/tea/coffee and homemade cakes. Meet the committee and area reps.

This year's guest speakers are the Essex and Herts Air Ambulance.

We hope to run a Christmas ride this year at Thorndon Country Park. Date to be confirmed but save the date of **30th November 2025**.

THANK YOU



To: **Joe & Team**

Of: **Essex Board & Timber**
Bakers Lane Black Notley

For: **Donating all the timber**

To: **Repair The Children's Play Area**

At: **Shalford Village Hall**

Tel: **01376 342691**



LOCAL ORGANISATIONS & CHARITIES

INDOOR CARPET BOWLS

**EVERY TUESDAY AT
SHALFORD VILLAGE
HALL**

FROM 7.30 p.m. to 9.15 p.m.



All ages are welcome to our friendly club. Come along and enjoy a game of bowls, a chat, plus tea, coffee and biscuits

Contact: Vic 07773 707404

SHALFORD LOCAL HISTORY ASSOCIATION



Meetings take place monthly
For date and more information
contact: Sally
07785 235000
or visit
<https://shalford-essex-pc.gov.uk/history-society/>

SHALFORD HORTICULTURAL SOCIETY



For more information

<https://www.facebook.com/SHSEssex>

<https://shalford-essex-pc.gov.uk/horticultural-society/>



MEET & GREET 1ST FRIDAY OF THE MONTH

**SHALFORD
VILLAGE HALL**

11 am to 2 pm

*William Bendlowe Charity
People Working For People
It's good to talk!*

FOSTAC

**Friends of St Andrew's
Church**



**Contact: www.fostac.co.uk
or
<https://shalford-essex-pc.gov.uk>**



CAR PARK EXTENTION

BY: ANDREW HULL

Hopefully most of you have noticed that the village hall car park has been extended.

I would like to give a *massive* thank you to the team at Deersbrook Farm for helping me - a huge amount has been done in a short space of time!

Here we have **Phil Blumfield**, **Chris Kipper Watson** and **Charlie Jarvis** who have all given their time and use of their tractor and trailer for *free*. A big shout out to **Sanjee**, Shalford Village Store for giving a large financial contribution towards materials. A big thank you to **G and B Finch** for supplying the aggregate at very generous rates. Also a big thank you to **Darren Radley** for his help knocking the old toilet block down and the use of his roller. Also a thank you to **Robert Stevenson** at Shalford Hall Farm for letting us tip some of the spoil there.



All of this work has been undertaken for free by everyone here
I'm proud to be part of a community which can get things done when
we come together!!

And yes, we do hope to tarmac at least some of the car park at some point in the future but it is hugely expensive

WELCOME RUSSELL

I AM DELIGHTED TO ANNOUNCE THAT
RUSSELL GREEN IS NOW OFFICIALLY A TRUSTEE OF
WILLIAM BENDLOWE CHARITY

THE CHARITY'S TRUSTEES ARE NOW
ALICE COX (CHAIR), RUSSELL GREEN AND
REV ALEX SHANNON

WE ARE PLANNING FOR THE FUTURE

MEET & GREET – FRIDAY, 5TH SEPTEMBER 2025



THANK YOU TO THOSE WHO CAME, TO THE HOME BAKERS AND THE TEAM
NEXT MEET & GREET FRIDAY 11 A.M. 3RD OCTOBER

2025 SAW BENDLOWE'S 5TH TRIP TO THE HUT ORGANISED BY MARIANNA A GREAT SUCCESS AS ALWAYS



On Friday 29th August we had our annual Bendlowe's coach trip to Felixstowe. We boarded the coach at 9.30am from Shalford Village Hall with heavy rain. I was afraid people would be put off and not turn up but all 51 passengers arrived. The weather forecast said it would brighten up later in the day so we were feeling positive for a good day ahead. By the time we arrived at Felixstowe the rain had stopped and the sun was breaking through.



With my band of helpers we soon had The Hut set up with table and chairs and soon after tea/coffee and biscuits were served. Some went off for a stroll on the promenade before lunch. The two girls, Sienna and Poppy were soon changed into their swimming gear and paddling in the

water. They had the beach to themselves. The rain in the morning must have put other people off.

At 12.30 our fish and chips arrived. As usual it was delicious and well appreciated. By this time it was quite warm and some were taking in the sun and sitting outside.





games or were happy to just chat. As always it ends up being a relaxing day by the sea amongst friends with good food.

At 3.30pm we boarded the coach for our journey home. We had an amazingly quick journey home to Shalford. The consensus was for another trip to Felixstowe next year so please look out for the date in the new year. I was fully booked for this year and I had a waiting list so it is proving to be a very popular event.

I would like to thank so many people - too many to mention. You know who you are. My team helped with setting up the room, making tea/coffee, the bakers and of course the clearing up. Without them the day would not have run smoothly.

Marianna



THANK YOU SO MUCH MARIANNA – LOOKING FORWARD TO 2026

SHALFORD HORTICULTURAL SHOW – 13TH SEPTEMBER



The SHS held their Horticultural Show at the village hall on September 13th.

After a very hot summer our usual wide range of vegetables were depleted but there were some on display.



The star in this section was the giant pumpkin which needed two people to carry it in!

Instead of many vegetables we had a fantastic quantity of fruit, apples, pears, figs berries, plums and grapes.

A large variety of jams, marmalade, cakes, pastries and rolls were exhibited as well as many entrants to this year's recipe of banana cake.



All the floral displays were very good and we had entrants to our new section of a wellington boot flower display as well.



The crafts were well supported as well.

There is a lot of talent in the village.

It would be great to see more children and grandchildren entering next time.

Thank you to everyone who contributed to our show and to those who came along.

SHS Team



AWARD	WINNER
The John Bahr Cup	Heather Smith
The Bentley Cup	Trudy Frost
The Jessie Hicks Tankard	Marianna Marriot
The Arthur Bright Cup	Heather Smith
The Peter Monk Cup	Richard Monk
The John Bright Cup	N/A
The Vera Smith Perpetual Challenge Cup	Richard Monk
The Aldworth Rose Bowl	Trudy Frost
The Nan Stevenson Trophy	Richard Monk
The Goodchild Cup	Eleanor Perry
The Hornsby Trophy	Heather Smith
The Sally Prime Trophy	Julia Hill
The David French Trophy	Ruth Phipps
The Perry Cup	Joint Trudy Frost & Caroline Ottley
The Len Chinnery Trophy	Carol Prail
Banksian Coin & Certificate	Heather Smith
Recognition Certificate	Kelly Palmer
Children's Prize	Noah Mills Caleb Whittaker



On 23rd April 2025 the Shalford ringers rang for St George's Day. The band consisted of Tim, Mike, Michael, Peter and Marianna.

On 8th May 2025 we rang at 6pm to celebrate 80 years since Victory in Europe Day. Photo shows Alexander, Tim, Michael, Adrian, Marianna and Peter who made up the band.



Each tower rang for approx. 25 mins. The group completed the evening with pizzas at The Red Lion. Photos show the group outside Finchingfield Church and some of the group in the bell tower at Shalford.

We are a friendly band and would love to recruit more members. We practice on Friday evenings at 7 pm at Shalford Church. You will be made very welcome, so please come and give it a go.

SHALFORD BELL RINGERS

**BY: MARIANNA
MARRIOTT**



On 15th August 2025 a larger group representing all four of the churches with bells in our benefice travelled together to ring for Victory in Japan Day 80 years ago. This ensured that all four churches had bells ringing on the day. They began at Great Bardfield at 5.30pm followed by Shalford and Wethersfield, ending at Finchingfield at 7.20



TRACTOR RUN BY MAC BEANLAND



On August 22 The Tractor Run Team was pleased to welcome a member of the Essex and Herts Air Ambulance support team to Brazen Head farm, so that we could officially handover the proceeds from this year's tractor run.

I am pleased to be able to report the total amount came to **£11,400** a truly wonderful amount for this very deserving cause, Shalford has certainly made use of the Herts and Essex air ambulance in recent weeks.





R.Wheeler

Roofing Services

**Tiling, Slating, Leadwork, Flat Roofs,
Chimney Work, Guttering**

- Free Estimates
- All Work Guaranteed
- Over 30 Years Experience
- Fully Insured
- References available

Tel: 01371 811308

Mob: 07951 349837

E-mail: RWheelerRoofing@gmail.com



 **01376 342111**
 **sales@januslimited.co.uk**

JANUS Contract Services Limited



ANIMAL FEEDS

Horse Feed
 Pet Foods
 Beddings & Shavings
 Wild Bird Foods
 Bird Feeders
 Chicken Feed
 Free Local Delivery



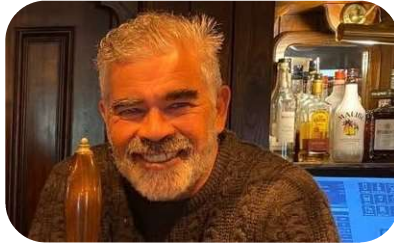
FENCING SUPPLIES

Field & Garden Gates
 Posts & Rails/Stakes
 Concrete Posts & Panels
 Electric Fencing
 Rabbit Netting
 Sleepers
 Delivery & Installation

Mounts Farm, Shalford Road, Rayne, CM77 6XA

www.januslimited.co.uk

Paul Pilgrim 1967-2025



The greatest shock that can make you feel sick
Is when news arrives unexpected and quick
a news bulletin arrived today
Of a great man who had just passed away

A man "mountain big" in every way
His fate was to leave us, on this dreadful day
The news came as a bolt from the blue
So many of us wish it's not true

A local man, Shalford through and through
There seemed no limit to what he could do
He took charge of a pub that was old and tired
And transformed it in a way that inspired

The staff, the food, the beers were on song
The folk band on Thursday's sung along
To the tune that he called for the many that came
To the George Inn in Shalford, his claim to fame

Locals and visitors were treated with class
Many will hope that all this will last
I know we'll miss the big man it's true
But Goodwill and loving support will see us all through ❤️

By: Terry Savage





CONDOLENCES



***We send our sincere condolences
to the family of Paul Pilgrim***

***Paul was a strong advocate
for the Community***

Paul made a difference

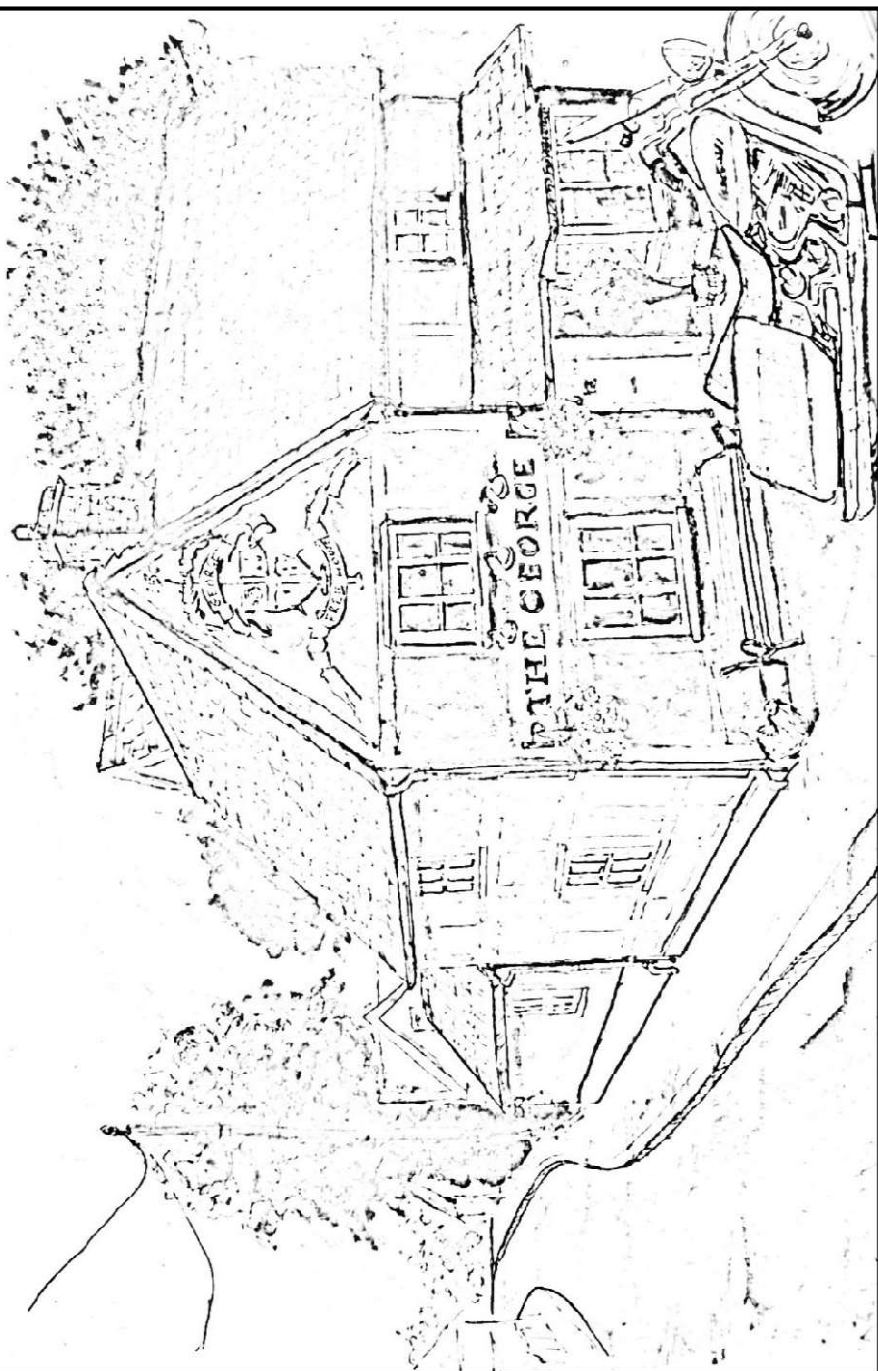
***He will be sadly missed
and always remembered***



Rest in Peace Paul



THE GORGEOUS GEORGE - IN MEMORY OF PAUL PILGRIM - BY: GRAHAM SILVESTER





Hearn Electrical

**DOMESTIC
COMMERCIAL
INDUSTRIAL**

aadan@hearnelectrical.co.uk

T: 07972 624171



City &
Guilds



Essex Roofing Services

GENERAL ROOF REPAIRS



LEAD WORK & FLASHING
STORM DAMAGE ROOFING
CHIMNEY REPOINTING
FELT ROOFING
SHEDS RE-FELT



GUTTERING CLEANED OR RENEWED



CLADDING, FASCIAS, SOFFITS
CONSERVATORY REPAIRS



**FREE
ESTIMATES**

**OFFICE 01376 326163
WORK 07775 998628**



CAPITAL GLAZIERS

UK Ltd



- Double Glazed Units
- Replacement Misted Double Glazing
- Glass Cut To Size
- Table Tops
- Cat & Dog Flaps Installed
- Greenhouse Glass
- Shelves
- Splash Backs Any Colour
- Emergency Boarding
- Emergency Glazing

SAME DAY DOUBLE GLAZED UNITS



01376 388511

www.braintreeglazier.co.uk

info@capitalglaziers.com

SO, YOU THINK IT'S ALL OVER

**October has arrived..... and you think it's all over,
time to hang up the trowel – *wrong!***

October is a time for preparation and renewal. This is not the time to put your feet up. Apart from the usual tidying, new plants need to be propagated as security for a hard winter and to preserve the tender plants which will not survive.



SALVIAS AND PENSTEMONS – Stem cuttings

Some Salvias are hardy but many are not, especially the beautiful, tall blue Amistad. Now is the time to take stem cuttings. Most Penstemons are hardy but always take cuttings as insurance. Although we have had a hot, dry summer we may have a wet cold winter.

Take a plastic bag with you, labelled if necessary, so that you can identify the colour of the plant. Find a stem which has not flowered about the length of the tip of your shortest finger to where the thumb joins the hand, approx. 5” or 12cm. Cut below a node (the knobbly bit) and pop the stem in the plastic bag. Take at least 5 stems from each colour plant. When you are ready, remove the lower leaves from each stem leaving 3 or 4 pairs and pinch out the top which will encourage roots to form. Recut to below a node just before planting. Fill a small pot with compost and dib a hole near the edge and push the cutting in. About 5 cuttings can be accommodated around the edge of each pot. Water in and leave either in a cold frame or against a sheltered wall until roots appear through the bottom of the pot. Pot on and plant out when frost is no longer forecast.

CHILLIES AND TOMATOES - Seed collecting

It is worth collecting the seed from the tomato and chilli plants which have been the most successful and tastiest. This seed will have adapted to your soil and growing conditions and will be better suited to grow well into sturdy productive plants for 2026.

Remove your best ripe chillies and allow them to dry completely in a paper bag in a warm space. Next February, remove the seeds from the casings and plant in a warm place, preferably a propagator.

Choose your most successful tomatoes and squash out the seeds. Spread them evenly onto kitchen roll. Allow to dry and store in a paper bag for sowing next year.

GRASSES AND HERBACEOUS PERENNIALS - Division

October is the time to divide grasses and many herbaceous perennials such as Asters, Sedums and Phlox as the soil is still warm and autumn rains will keep the new plants alive. Sometimes it is difficult to dig out and separate the plant due its sheer size or location. If this is the case, find the edge of the plant and dig out a portion to plant elsewhere. This can be done a number of times if required.

Mulch as you tidy the garden for winter. Use homemade compost, used compost from summer planted pots, well-rotted manure, or leaf mould. Mulch with whatever you can get your hands on for without adequate nutrition your plants will not thrive.

Happy Propagating.

The Theoretical Gardener

Wethersfield Fire Station Open Day

By: Sally Welsh

On Saturday 6th September, Wethersfield Fire Station held its annual open day. Visitors were able to get a close-up look at the station's own fire engine and the equipment used by its fire-fighters as well as meeting its crew. A dramatic demonstration of what **not** to do when a chip pan catches fire (ie do **not** throw water on it!) was given and excited children got the chance to put out 'fires' in the station's newly made 'fire house' with a real hose! A perfect day weather-wise, visitors also enjoyed homemade cakes and drinks and a competition to guess the number of balloons in the fire truck with donations going to the firefighters' charity.

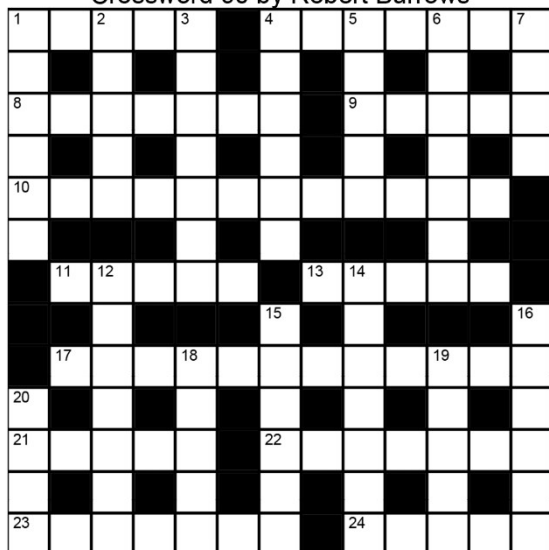


Wethersfield are currently recruiting new on-call firefighters.

Essex Fire and Rescue Service has 500 on-call firefighters in Essex. They're all paid to protect their communities and some have served with us for more than 40 years. They cover more than three quarters of fire stations in Essex and our on-call firefighter model is similar to one used all over the world. On-call firefighters all live or work within five minutes of the fire station and are paged when there is an incident. This means they're not based at the fire station full-time and they can go about their daily business like working other jobs or spending time in their community. All while helping to keep the fire station available when needed. Firefighters need to be 18+ but upper limits are based on fitness not age. For more information search 'Join Essex Fire'.



Crossword 90 by Robert Burrows



Across

- 1 Burning (5)
- 4 Bulging eyes (3-4)
- 8 Retirement salary (7)
- 9 Reasoning ability (5)
- 10 Domesday Book, Essoberiam Soberia (5-8)
- 11 Southpaw (5)
- 13 Incensed (5)
- 18 Essex Hamlet (8-5)
- 21 African antelope (5)
- 22 Arch of coloured bands (7)
- 23 Wooden lattice (7)
- 24 Ungainly (5)

Down

- 1 Add (6)
- 2 Within (5)
- 3 A significant appellation (7)

4 American cloak (6)

- 5 Sign of life (5)
- 6 Curdled milk (7)
- 7 Metrical unit (6)
- 12 Better (7)
- 14 Support system (7)
- 15 Online newsgroup system (6)
- 16 Loves (6)
- 17 No matter what (6)
- 19 In any way (2,3)
- 20 Arm joint (5)

Cryptic Across

- 1 Burning if Rae is organised (5)
- 4 Sailor-man, D with bulging peepers (3-4)
- 8 Government support opens in dispute (7)
- 9 Clog I break, with

good reason (5)

10 Thorn in hose, Ruby? Terrible village (5-8)

11 Sinister person (5)

13 Very angry with IRA terrorist (5)

18 West garden's NE! Strange village (8,5)

21 Some bunny, a lame antelope (5)

22 Spectrum in the sky (7)

23 Tillers sadly need garden support (7)

24 Awkward, like bonfire night man? (5)

Cryptic Down

1 Attach the broken pen pad (6)

2 Headless law-breaker inside (5)

3 Descriptive word, the piet maybe (7)

4 No chop for this garment (6)

5 E Plus, sadly, but essential for life (5)

6 Hug Tory to get milk product (7)

7 Poetic foot (6)

12 Late, Vee? Maybe lift up (7)

14 Fixing the guide ropes? (7)

15 Employ ten to get search engine (6)

16 Worships Da, Rose? (6)

17 However, take any path (6)

19 By any means (2,3)

20 Terrible bowel in the arm! (5)



Buzzing News from the Hives of Gill Powell



As I write this, Summer is dramatically changing into Autumn, the grass is beginning to revert to its usual colour and the hedge rows have breathed a sigh of relief having had a good dose of rain.

During the long hot summer days, the bees have been extremely busy producing a plentiful amount of honey. I was lucky to have my daughter on hand during one of the extractions earlier this summer.

We had spent the best part of the day busily uncapping and spinning the frames in a very sticky kitchen, it was getting late, so we decided to order a takeaway for supper.

When it turned up the delivery man wanted to buy a jar of honey, he asked if it was produced here so we invited him in. He was so excited when he saw what we were doing he just kept asking questions and saying 'Wow'. Half an hour later he left having had a master class in honey extraction. It was a pleasure to be able to answer his questions and impart a small amount of information to somebody who loved honey but had no idea how it got from 'bee to jar'.

This year I have extracted honey three times, once after the Spring blossom, this was a warm golden colour, next the mid-season honey which came from a wide range of forage including rape, this honey soft set itself and has a buttery flavour, the last extraction was pale and floral which indicates borage and blackberry, showing how the different foraging produces different colours and flavours in the honey.

Over the summer I was asked if I would like to keep a couple of hives at Stebbing on a piece of land belonging to a new beekeeper who needs a bit of help and advice from time to time. So, I now have an out apiary as it is called, with two hives which have produced calm and happy bees which is a change from the rather angry bees I have in my garden. The only downside is when I go to check the bees, I must make sure I take all the equipment needed, no running back to the shed for that frame or queen cage!



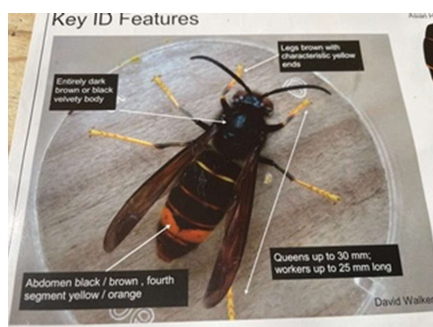
Now that all the honey is processed and stored, it is time to clean and tidy all the spare boxes and frames which is a very satisfying job. The frames that had the honey in them (we call honey supers) will get infested with wax moth eggs. These need to be removed as soon as possible otherwise the whole frame will be ruined by the larva which eats the wax and the wood. To do this I put all the used frames in an old chest freezer for a couple of weeks this will kill everything that is alive on the frames.

In the wild Wax moths have an important job to do which is to clear away old wax from wild colonies of bees that have moved on; after eating all the wax they leave a slightly lemony scent behind which bees are attracted to when they are looking for a new nest site.

We use bait hives in the spring to attract swarms that are looking for a place to nest, in these we put an attractant which is usually lemongrass. This mimics the effect of the wax moth.

Now it is time to start getting the honey and other products ready for the annual Honey shows. Beekeepers take these very seriously and can be caught buffing up glass jars and polishing slabs of golden bees wax lovingly purified over many weeks.

One of the last flowering plants that bees and wasps love is Ivy, not always a friend of the gardener but it's flowers are one of the last food supplies for all types of pollinators. So, if you are planning to cut down any ivy please wait until the flowers have gone.



Lastly the dreaded YLH – yellow-legged hornet as we must now call them, which I am sure you have heard about as it tries to invade us from Europe and beyond. This time of year you might see one on an ivy flower as they too are looking for a last meal, sightings of them have been seen as near as Ilford and Ipswich.



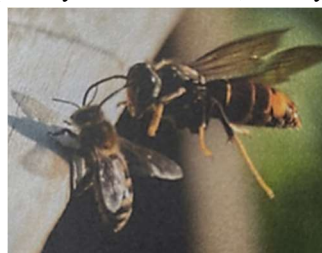
It is important for all of us to keep an eye out for these marauding creatures as they play havoc with honeybees as the French and Belgium farmers have found out. If you can download the Asian Hornet Watch app it will tell you all you need to know and what to do if you see one.

Sorry to leave on such a glum note but it is vital that these hornets are prevented from taking hold in this country for as long as possible until we can appropriately deal with them, so they do not decimate our bees and other pollinators.



Bee Fact

Very soon it will be time to fit 'mouse guards' to the entrances of our hives, as mice like to hibernate in them, as there is full central heating and a good source of food.





Bell Fencing

 *Equestrian*  *Agricultural*  *Commercial*  *Domestic*

www.bellfencing.com

enquiries@bellfencing.com | 07786 914823

PLUMBING AND HEATING

- ✓ Central heating installation and maintenance
- ✓ Oil boiler installation, service and repair
- ✓ Oil tank replacement
- ✓ Unvented cylinder installation service and repair
- ✓ All other plumbing work

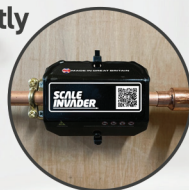
Call P Burton on: 07906891667



SCALE INVADER

Are you constantly battling with limescale?

Here's the solution



- ✓ Reduces limescale
- ✓ No maintenance, no power
- ✓ Saves money on electric/gas bills
- ✓ Just fit & forget
- ✓ Easy to install
- ✓ Money back guarantee
- ✓ No cutting of pipe work

www.scaleinvader.com 07906891667
info@scaleinvader.com

IN THE UNITED BENEFICE of Finchingfield, Cornish Hall End, Shalford, Wethersfield, Little And Great Bardfield THE PANT VALLEY CHURCHES



**Shalford
St Andrew's**



**Wethersfield
St Mary
Magdalene**



**Finchingfield
St John the
Baptist**



**Gt Bardfield
St Mary The
Virgin**



**Little
Bardfield
St Katharine**



**Cornish Hall
End
St John the
Evangelist**

From the Vicarage...

October is a month which, as the change of season mixes with the Church calendar, sees the culmination of Harvest Festival services. The cycle of harvest activities, begun back in July, draws to a close, and churches are decked out in produce amidst the rich colours of autumn. For communities such as ours, which include farms and those who own, run and work on them, harvest has a deeper significance than simply being an annual ritual – we get a flavour of the fact that not all harvests are equal, and that the feelings accompanying harvest thanksgiving vary accordingly.

This year has been a generally difficult one for farmers; the lack of rain over many months has not been good for most crops, and this comes at a time when much farming finance was already in a precarious position. It means that reflecting on the harvest season gives us a few more things to think about.

Firstly, it is a reminder to us that real gratitude for the food we eat means not taking it for granted. We are so used to the idea that technology can shield us from most problems that it is easy to forget that we are still dependent on our environment for our continued flourishing, and even our survival. The farming community feels this dependence year on year, and keeping harvest in a way which is attentive to the realities of each season's yield helps remind those of us who are not so directly connected to the land.

Secondly, it makes us think more deeply about issues of justice concerned with access to the essentials for life. When food is scarcer, the principles of sharing and just distributing of the earth's produce become more critically important. With food prices having risen noticeably in recent years, the now well established support of food banks around harvest time has become an essential element of our society's social support.

The Bible contains many accounts of difficult harvests, and they are often accompanied by moral lessons: they show the contrast between those who hoard and those who share (the latter generally coming out better in the end); they often accompany the accounts of rulers who have considered themselves invincible, who then learn that wealth and armies can only shield them so far when the land is against them. If a difficult harvest reminds us, then, of anything, it is the reverence due to the earth and those who work close to it. What comes from their work is a precious and sacred gift, and our relationship to it runs deeper than simply what we eat.

Rev'd/Fr Alex

SERVICES FOR OCTOBER IN THE PANT VALLEY CHURCHES

Sunday 5 October

9am Holy Communion (traditional language) – Cornish Hall End

9.30am Harvest Festival – Shalford

10.30am Family Communion Service – Great Bardfield

11am Prayer & Pilgrimage (Celtic Morning Prayer) – Wethersfield

5pm Compline (Night Prayer) with reflection – Little Bardfield

Sunday 12 October

8am Holy Communion (traditional language) – Shalford

9.30am Pet Service – Finchingfield

10.30am Morning Prayer – Great Bardfield

11am Holy Communion – Wethersfield

5pm Sung Evensong – Wethersfield

Sunday 19 October

8am Holy Communion (traditional language) – Finchingfield

9.30am Morning Prayer – Shalford

10.30am Sung Communion Service for Harvest – Great Bardfield

11am Family Service – Wethersfield

Sunday 26 October

8am Holy Communion (traditional language) – Great Bardfield

9.30am Parish Communion – Shalford

10.30am Morning Prayer – Great Bardfield

11am Family Communion Service – Wethersfield

Regular Services and Events during the week

Monday

8.45am Morning Prayer – Finchingfield

1.30pm ‘Faithful Fiction’ book club (1st weeks) – Between the Lines, Great Bardfield

Tuesday

8.45am Morning Prayer – Great Bardfield

10am Baby & Toddler Group – Great Bardfield ‘St Mary’s Munchkins’ story & song time with refreshments

Thursday

8.45am Morning Prayer – Wethersfield

10am Prayer Group (1st, 3rd & 5th weeks)

Coffee Morning (2nd & 4th weeks) – Shalford

Coffee Morning (3rd week) – Cornish Hall End

10.30am Eucharist – Little Bardfield

Friday

8.45am Morning Prayer – Shalford

Saturday

10.30am (3rd weeks) Coffee Morning – Wethersfield

SHALFORD CHURCH OF ST ANDREW'S PANT VALLEY CHURCHES CHURCH WARDEN'S REPORT



**Shalford
St Andrew's**



**Wethersfield
St Mary
Magdalene**



**Finchingfield
St John the
Baptist**



**Gt Bardfield
St Mary The
Virgin**



**Little
Bardfield
St Katharine**



**Cornish Hall
End
St John the
Evangelist**

Church bells! Do you love them or loathe them? Whatever your views, St Andrew's possesses a ring of 5 bells and they are high on the agenda this month – and possibly for some time to come!

In August the entire bell installation, bell chamber, ringing chamber et al was inspected by an expert from a renowned firm of church bell-hangers and we received his report in due course. In short, the whole “package” is in severe need of attention and one bell in particular has a small crack which must be repaired to prevent a nasty accident in the future. It would appear that the last time any significant work was carried out on the bells was in 1969 and much of the construction of the frame and fittings dates back to 1887 so an overhaul now would be A Good Thing. At least the bell ropes are in good condition, having been given recently in memory of her late husband, David, by Amanda French, so no worries on that score!

The 3rd and 4th bells date from 1601, the 2nd from 1690 and the 1st and 5th from 1828 and 1887 respectively. Their weights range from just over 4cwt (the treble and highest note) to the tenor bell (the largest and deepest note) at over 9cwt – that's almost half a ton! Three of the bells were cast locally, two in Colchester and one in Norwich, and the others were cast in London.

We have yet to work out a schedule for the necessary repairs and maintenance but it would make sense to have everything that is mentioned in the report to be done while there are skilled contractors on site. It is no small task to remove even a “small” bell from the tower – and the 2nd bell, the one with a crack, will need to be removed to a specialist welding firm. The entire operation, to include cleaning, repairs and maintenance will cost in the region of £25,000 and we will be looking for some grant-funding towards that sum although the church will be able to supply some of the funds out of the generosity of past givers. If you love the sound of the bells as they ring for church services and special occasions and want to keep them in good condition for another 50 years (at least!) will you consider a contribution to the work, maybe in memory of a past loved-one? Ways and means to contribute will be decided shortly and I will keep you updated.

I am, as ever, immensely grateful to our faithful ringers from Shalford and beyond who keep the bells of Shalford making a joyful noise. While the work is under way they will be silent for some time but I'm sure the village will be heartened when they hear that memorable and timeless sound once again.

Hilary Penney

SHALFORD CHURCH OF ST ANDREW'S CONTACTS

Vicar, Revd Dr Alex Shannon, The Vicarage, Finchingfield, Tel: 01371 810309
Email: rev.alex.shannon@gmail.com

Associate Minister, Revd Canon Janet Nicholls, Park House, Braintree Road, Shalford, CM7 5HQ, Tel: 01371 851317, Email: jnicholls@chelmsford.anglican.org

Treasurer & Reader, Michael Chumbley, Redwing, Church End, Shalford, CM7 5EZ
Tel: 01371 851101, Email: mike.chumbley@btinternet.com

Churchwarden, Hilary Penney, Orchard View, The Chase, Shalford, CM7 5HH
Tel: 01371 851762, Email: spsware@copper12.co.uk

Safeguarding Representative, Sarah Pilgrim, Fieldside, Lombard Street Finchingfield, Tel: 01371 850781 Email: pilgrim511@btinternet.com

Ringling Master, Roy Threadgold, Plumley, Braintree Road, Wethersfield
Tel: 01371 850481 Email: roy@boydellsdairy.co.uk

Captain of the Bell Tower, Michael Mason, 6 Clifffield, Shalford, CM7 5HP
Tel: 01371 850125

Friends of St Andrew's Church (FOSTAC), Chairman Sue Morton 42 Hereward Way, Wethersfield CM7 4EG Tel: 01371 850626 Email: suebeazleyend@gmail.com



Stay on top of your health and check your blood pressure from home with Essex Library Service's new loan scheme!

Borrow a blood pressure monitor from any Essex library or mobile library from 8 September 2025

When you borrow a blood pressure monitor, you'll also get:

- Instructions on how to take readings and what to do with the results
- A blood pressure diary to record your readings
- Links to online resources, including instructional videos and further guidance

You don't need a GP referral, just a library card!

Link: <https://libraries.essex.gov.uk/news/blood-pressure-monitors-for-loan>

Find out more about borrowing a blood pressure monitor from your local library.



For All Your Marketing Needs...

appliedimage

WEBSITES



- Website Design
- Website Marketing
- SEO
- E-commerce

PRINTING



- Leaflets
- Brochures
- Booklets
- NCR Sets

SIGNS



- Sign Boards
- Banners
- Feather Flags
- Decals

Tel: 01376 342580

support@appliedimage.co.uk

www.appliedimage.co.uk

Shalford Village Store **Your Local Convenience Store**



For all your essentials...
We stock a wide range of
fresh & chilled food,
including local produce.

Daily newspapers available in
store or delivered to your home

Opening Hours

Monday - Saturday 7.00am til 8.00pm

Sunday - 8.00am til 7.00pm

Telephone: 01371 850944

The following article was written by DiDi for Bendlowe's Bugle September 2020 during lock down and I thought it well worth reprinting after reading her Wartime Memories printed last month in September's magazine. I do hope you agree.

--o0o--

LIFE AND WORK ABROAD WHEN IN MY LATE 20s 1961 - 1965

BY: DIDI CROOK

I am no longer young, being in my eighties. I often reflect on my past life; the people I have met, and the experiences I have had. So far, I feel I have had a lucky and happy life. Having been a child in World War II, I was alerted early on to the fact that Humanity can be as evil and cruel, as it is kind and loving. I used to have childish dreams of going to Hitler and asking him to change, and make peace with all peoples. I always had the feeling that I could have been born anywhere in the world – what lucky chance was it that I “landed” in England which recently has not suffered occupation first hand, with the attendant brutalities and suffering. I felt aware that I could just as easily have been born Jewish, in Germany or Europe. I sensed something of how terrifying that could be – how I could never have felt safe and free from underlying fear. I have always pondered on these things – and feel flooded with relief and gratitude for a life in a democratic and generally kind society.

As I grew older, I believed in the French quotation “The price of Liberty is eternal vigilance”. I realised that it was not just in Europe that these things happen; I felt horror at the Korean War, Vietnam, South Africa, the Middle East, Angola, and Africa. Then one day at a meeting of the Buddhist Society in Cambridge, I first heard of Tibet, and the plight of the Dalai Lama and his people.

Although originally trained as a Nurse, I have never had much confidence in my abilities, and felt helpless in the face of so much oppression everywhere – yet clearly wished I could do something. I now realised there was no way I could visit a dictator, and ask him to stop what he was doing! But the idealism of my childhood remained dormant.

I heard of Service Civil International, an organisation working for Peace, with headquarters in Switzerland. Through some Quakers, this organisation originated at the end of the First World War, and English, German, and French, young people went to help rebuild villages in both France and Germany. Their Motto was “Peace – through Deeds, not Words”. They would work anywhere, together with anyone, provided they were not taking paid work away from others. So the work was usually in emergency situations, or where extra hands were required. Often the longer-term work was “trouble-shooting” – finding out about situations, making reports, and attempting to attract more organised funds and workforce. But the main aim was for people to work together from different nations, particularly those where there was a legacy of hatred and fear. It was not an Aid-giving organisation, such as the then beginning Peace Corps, and similar groups. There were exchanges of people to work in each other's countries, regardless of the economy of the country. Indians would come to work in England, also Japanese, and we would go to those countries.

Being so impressed with S.C.I., I eventually took a deep breath, and volunteered to work with them. I deeply believed in their principles. My work was mainly as a LTV (long-term

volunteer), to oversee and treat the health situations wherever I was as best I could – usually with no Doctor on site, and little resources, except my knowledge gained during training and from books which had to be severely adapted to the non-sterile conditions and lack of any building built for the purpose (except in Japan) and any medicines. Bandages, cotton wool etc were bought with money sent out from good people at home in England who wanted to help. I took out my own stethoscope, syringes, needles etc. (again this was not required in Japan).

Service Civil International Volunteering for peace since 1920

Mobile Library



Further information can be found at libraries.essex.gov.uk

Barryfields, Shalford CM7 5HJ

Time: 11:20 - 11:50

Telephone Kiosk, Jaspers Green CM7 5AU

Time: 12:45 - 13:15

Dates: 20/10, 10/11, 1/12, 22/12

REMEMBRANCE








Should you wish to remember a family member, friend, or even your favourite animal please email the details to me (Alice) at shalford_village_magazine@btinternet.com or telephone me on 07850264518 and I will ensure they are included in November's magazine. Photos welcome.

Christopher

THE LOCKSMITH

ARE YOUR LOCKS BEHAVING BADLY?

We Value Old Fashioned Customer Service
A Local Trusted Family Business Since 1989

-  Specialist in UPVC & Wooden Doors
-  No Call Out Charge
-  No Fix No Fee
-  All Work Fully Guaranteed
-  10% Senior Citizen Discount



For More Advice & Help Call Christopher:

07772 111 222

www.christopherthelocksmith.co.uk

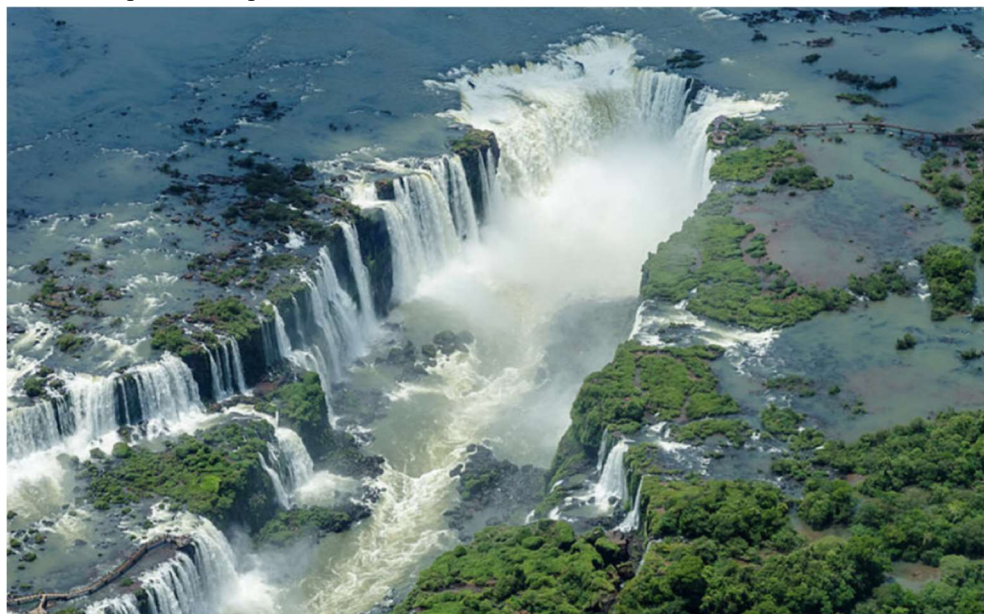
MOTOTAXI JUNKET

BY: ANDREW HULL

I thought I would follow on from last month's theme of three wheeled travel, and write about my travels across a large chunk of South America by mototaxi! The mototaxi is the pinnacle of terrible three-wheeled machinery, a vehicle so rubbish they rarely leave a town. They are a cross between a moped, sofa and an umbrella, mostly designed for small taxi journeys around compact urban areas in South America.



However, I had signed up for a race which would take us approximately 3000km from Asuncion, the capital of Paraguay, across the border into Bolivia and up, up and up, over the Andes to Cuzco in Peru. Regular readers of my articles can probably guess that this involved no set route, no back up and pretty much no clue, coupled also with minimal Spanish speaking skills! The perfect recipe for adventure.



True to form, I arrived in Argentina on my own a few weeks before the New Year's day race start. I had decided to soak up the atmosphere of Buenos Aires then head up North to Iguazu Falls. Iguazu Falls are, in my opinion, one of the planets most awe-inspiring sights, they are simply astounding! A chain of hundreds of waterfalls nearly 2 miles in length. The power

and noise of the cascades make for a jaw-dropping, visceral experience. It is the world's largest waterfall system - made all the better by the setting. The falls are split between Brazil and Argentina in a large expanse of national park, much of it rainforest. For some reason it doesn't get much press with Niagara Falls and Victoria Falls being more well-known, possibly.

Whilst in Argentina I had arranged to meet up with a Dutch guy called Marcellus, he was also signed up to do the Mototaxi Junket Race and was calling out to meet up with any race goers to cross the border into Paraguay.

I had zero preconceptions of Paraguay, it is one of the least visited countries in South America. Upon arriving in Asuncion, the capital, with Marcellus, it felt like we had entered a rather wealthy country. Over the coming days, the other 30 or so racegoers arrived at the hotel we were told to stay in, a rather mixed bunch of ages, and nationalities. All of us had a huge sense of anticipation and couldn't wait to get started. Such high spirits, along with a sense of anticipation, excitement and the beginning of a New Year, meant all of us probably celebrated a little too hard, with most of us not going to sleep on New Year's Eve and partying through the night until we were due to leave in a procession through the city led by a police convoy! Well, the procession was comical, 30 mototaxis driven by people mostly in fancy dress, probably still drunk, being led out by two police motorbikes, one of whom had our Peruvian organiser sitting on the back of the bike without a helmet drinking cans of beer! This set the tone for the rest of the trip, utter chaos unfolded!

When you leave Asuncion, you realise that wealth is very much concentrated in the capital city and the country outside the city is a very different place. Sixty percent of the land mass is made up of the Chaco, it's been referred to as one of the last great wildernesses on the planet and is one of the least densely populated areas in the Americas. All I knew at the time is that it is hot, very hot and I had to drive my mototaxi right through the middle of it! Temperatures were well above 40 degrees during the day and didn't seem to drop much during the night! On the first night we pitched our tent on the gravel forecourt of an isolated petrol station, the only sign of life for miles! It was like sleeping in a sauna and not to be recommended!

This particular road in Paraguay (the only tarmac one outside of the city) is probably the longest, straightest, flattest road I've ever been on anywhere in the world, I think it was about 700 km long and probably elevated about 50metres the entire time and had a slight turn to the left! This coupled with the heat leaves an almost "other-worldly" sensation!

After a few days, myself and a couple of other teams had joined in convoy and were approaching the Bolivian border. Now for some reason, the perfectly good tarmac road for the last 100 miles to the border had been deliberately blocked by large logs at regular intervals making it impassable. The only route to the border was off road! We finally made it to the border crossing, manned by soldiers who I am pretty certain had never seen such a random selection of rubbish vehicles driven by people in fancy dress who hadn't washed for 4 days. They certainly had not seen anything like the paperwork we presented, as they immediately told us we couldn't enter! Not what we wanted to hear. Luckily for us, part of our three-team

motorbike convoy were two girls, one from Russia and one from Canada, they seemed to be able to communicate better with the border guards and soon our paperwork was stamped!

Night time was rapidly approaching and we were only able to push on to a small village a few miles further on dominated by a small army camp. Desperate for a bottle of water we appeared to have arrived in the only village in Bolivia that didn't sell water, only beer! We were also told that the only safe place to stay is inside the army camp. So, it was with beers in hand we were let into the army base to chuckle over our previous few days' adventures!



We had two weeks to cover the entire distance and I could go on for pages and pages on the silly turns and places we ended up! However, let me give you some tips if you ever find yourself trying to traverse a large chunk of a continent in a mototaxi. They are driven by two chains, which drive only the back left wheel, so driving in a straight line is impossible (not ideal for Paraguay). The chain

regularly breaks, so you need to have spares. Also bolts become undone very easily, mostly through vibration. Two guys were killed in the pioneers event the year before doing the same trip, the wheel vibrated off close to a cliff edge and sadly they lost control. Punctures are common. With these problems in mind, we had the choice upon entering Bolivia of heading West over steep mountains to the Uyuni Salt Flat, the world's largest salt flats. An almost 11000 square kilometre landscape of bright white salt, rock formations and cacti studded islands; or, we could go due North, skirt the amazon basin and try and stay on flatter ground for longer! Judging by our efforts on steep ground we decided to skirt the amazon and head for a city called Santa Cruz. All I can say about Santa Cruz is that it has a lot of stretched limousines and fancy hotels, I also read something about it being very close to one of the biggest cocaine producing areas in Bolivia!

When you are heading from the lowlands of Paraguay to Cuzco in Peru there is something you cannot escape, you eventually have to cross the Andes! The Andes is the world's longest mountain range running almost 4500 miles through seven countries. The section we had to cross included the Altiplano, it is the area where the Andes are the widest and it is one of the most extensive areas of high plateau on Earth outside Tibet. All I know is that 150 cc engines don't particularly like the elevation and my body with alcohol also doesn't like it as, at one point, I blacked out when we went over a pass over 5300 metres and I had to get out and push the mototaxi! Not eating for the previous 24 hours probably didn't help.

The roads here are amazing, we traversed some of the roads you see on television normally undertaken by the likes of Jeremy Clarkson and the Top Gear lot or other programmes like

the World's Most Dangerous Roads. Blind corners, landslides, sheer drops, combined with three-wheels certainly sharpens the senses!

So, after we stopped at La Paz, the capital of Bolivia and the highest capital in the world, we were soon headed for the border with Peru. We were given one piece of information from our organisers and that was to use this particular crossing as all the paperwork had been sorted and they were expecting us. Well, this proved to be the worst information they could have given us as, yet again, we were told we couldn't cross! We did have an ace up our sleeve though, the mototaxi junket organisers had a fixer on the ground, a girl named Willow, a rather mesmerising red head who spoke fluent Spanish and had worked around the world filming documentaries with Bruce Parry on the excellent Tribe series that was popular a good few years ago. She had tried bribing the border guards and generally tried every trick in the book but the only information she got was that the guards change at midnight and there is a window of opportunity to push our bikes over the bridge into Peru under the cover of silence and darkness as the guards change. Willow had found a place in town on the other side of the crossing in Peru where we could hide our mototaxis up! So, the plan was set, we would push our mototaxis over the bridge on the stroke of midnight then quietly start up our bikes to get to the guest house where we could bypass cumbersome paperwork! So, on the stroke of midnight, we quietly pushed our trusty steed over the bridge approx 50 metres then, when we reached the other side, we fired up our mototaxi forgetting our exhaust pipe had fallen off earlier that day! Our cover was blown! We scarpered quickly to our pre-planned guest house rendezvous! Probably illegal, but it was certainly an adventure!

From the border, we hammered our mototaxi hard past Lake Titicaca, said to be the birthplace of the Incas and the highest navigable body of water in the world. Knowing the finish line was only a few days away in Cuzco, we could push the bike to its limit. Along the way we were met by several police road blocks which, when we first got stopped, was quite nerve racking considering our chosen method of entry into the country. However, my team mate had come up with the cunning plan of pretending not to know even a single word of Spanish and anytime the police would speak he would look blankly at them. This had the desired effect of the police becoming increasingly agitated - to the point where they would wave us on! We even managed to perfect this look of bewilderment at further police blocks. We wouldn't even stop, just slow right down and wave and smile at the police and then just carry on. It is amazing what you can get away with when driving the right vehicle wearing a white boilersuit and it is also amazing that we avoided being arrested!

To cut a long story short, we arrived in Cuzco, one of the first teams. It was quite an amazing sense of achievement and I think everyone that participated on that event realised we had done something special. We partied hard that evening, all of us, Junketeers forever!

That was the last time the organisers did that trip through the three countries, as it was deemed too difficult and too dangerous. They carried on for a few more years just doing the event in Peru. Then, after a while, they swapped the lethal mototaxi for the more comical monkey bike. I just know I was lucky to do that trip and I am still friends with the people I met. In fact, the following year myself and my new Dutch mate Marcellus drove a tuk from the sinking city of Jakarta in Indonesia, across Sumatra, over to Malaysia and up into Thailand...but that's another story



THE HUNDRED PARISHES SOCIETY

www.hundredparishes.org.uk

By: Ken McDonald, Secretary



Recently, I was privileged to watch two bats flying around my garden. They were so quick and acrobatic it was difficult to keep them in view. Bats and their roosts are legally protected so must not be



disturbed. Bats are mammals, giving birth to live young. It reminded me of how lucky we are in The Hundred Parishes to have so many wild mammals in our mainly rural area.

There are several kinds of deer locally, mostly Fallow, Roe or Muntjac. Larger herds are usually Fallow deer which have “palmate” antlers, shaped like the palm of a hand. The smaller Roe deer may be seen in smaller groups – they have a white rump and no visible tail. Muntjac are smaller still and tend to be solitary; they have horns and “tusks” - downward-pointing canine teeth.



Out enjoying our latest walk, number 188, my wife and I surprised two hares who disappeared at great speed when they spotted us. They can run up to 45mph over short distances.

We regularly see foxes in our garden, usually courtesy of our inexpensive night vision camera. In the spring, we enjoyed

watching the young cubs playing. Foxes seem to be a more common sight now, even during daylight, and regularly venture into built up areas. The camera occasionally spots a badger; he is usually looking for peanuts.





Anyone lucky enough to see hedgehogs in their garden should look after them as their numbers are in decline. They are nocturnal, so at dusk we should put out a shallow bowl of fresh water (not milk as it is bad for their digestion) and perhaps some dog or cat



food. They may repay you by eating slugs and insects although our experience has been that they prefer commercial hedgehog food like Spike's Dinner.



Photos

A: Pipistrelle bat B: Fallow deer C: Fallow deer D: Muntjac deer E: Hare F: Fox
G: Badger H: Hedgehog



Save money and cook better
than the takeaway

JOIN OUR **FREE** FUN COOKING COURSES

...all you need is a kitchen and a phone!

Free, fun cooking
courses **AT HOME**
Cook great food in
just two weeks!
Impress friends
and family

Exciting meals can be quick, fun, easy and cheap to cook with our
FREE (ingredients included), flexible, home-based short courses



CHANA MASALA



ITALIAN PASTA SAUCE



MIDDLE EASTERN PILAF



To register

Phone or text/Whatsapp **07751 890 912**

or email: **Braintree@bagsoftaste.org**

or you can sign up online:

<https://bagsoftaste.org/students>



Braintree
District Council

Are you worried about the rising cost of food and how to eat healthily on a tight budget?

Then join one of our free, fun cooking courses. Learn how to make delicious, healthy meals from all over the world whilst saving money.

All you need is a kitchen and a phone!



About the course

- **FREE**, ingredients included*
- Cook tasty, healthy meals, cheaply
- Get tips on how to budget and save money when you're shopping
- Learn how to waste less

How does it work?

- We deliver three step-by-step recipes and all the ingredients you need, straight to your door
- Your personal mentor will support you by phone or WhatsApp with lots of tips and advice along the way
- At the end you'll get a free gift of wallet-friendly recipes

What do I need to do?

- All we ask is that you cook the three recipes and send us photos of your lovely food!

How long does it take?

- About two weeks but you can work at your own pace

How do I join?

- Register online:
<https://bagsoftaste.org/students>
- Call/WhatsApp **07751 890 912**
- Email Braintree@bagsoftaste.org

Once we've confirmed your registration we'll contact you to arrange your delivery



LEARN TO COOK



EAT LESS TAKEAWAYS



SAVE MONEY



IMPROVE HEALTH



HAVE FUN

* For qualifying participants only

Whatever life stage you are in, knowing how much money you need to maintain your lifestyle is crucial to you feeling comfortable and in control. By prioritising you and your objectives, we take the guesswork out of what tomorrow looks like – so you can go forward with confidence, knowing your financial strategy is there to support you.



IN RETIREMENT

After a lifetime of work, this time is all about you. We're here to help you enjoy this next stage, without having to worry about money.

PLANNING RETIREMENT

With our lifestyle planning services, our expertise and our excellent track record, we can help you live the retirement you want.



A BUSINESS OWNER

We know that, when you run your own business, life can sometimes be too busy to focus on the future, especially in terms of your finances. We can help.

LOOKING FOR LATER-LIFE CARE

As we get older and our needs change, we may need to think about how we'll manage those changes financially. We can help you and your family do just that.






HarperLees
FINANCIAL PLANNING

We're Top Rated in
2023!

Vouched for

TOP RATED
ADVICE FIRM
2023

Unit 4 Rays Farm Barns, Ingatestone, Essex, CM4 9EH

01277 350 560

info@harperlees.co.uk

harperlees.co.uk

DO YOU NEED: A FINANCIAL PLANNER OR FINANCIAL ADVISOR?

Having frequently been asked what my job title is, followed up with a response of ‘you mean you are a Financial Adviser’, I often found myself getting quite defensive over my title of Financial Planner not Financial Adviser and there are many reasons around this. More recently, I have realised the job title doesn’t matter, what does is educating and informing people about what their financial future looks like and where changes can be made to either keep everything on track or improve things for them.

There is a difference between Financial Planning and Financial Advice and it can be difficult to describe at times. The best definition I have heard, and the one I like to use, is that financial advice is like getting a prescription for medication or a plaster for a cut, it is the end solution to your problem. But how do you work out what your problem is in the first place to understand the treatment needed? Now don’t misunderstand, please don’t list off your medical problems to me and expect me to have a clue how to help, the only answer I can ever give in my house is ‘Calpol will fix that’! On the other hand, as a Financial Planner, it is my job (and my privilege) to help you with your course of treatment for your financial problems, once we have completed a full check up and run all the tests required.

Let’s talk about some of the solutions you may have been offered in the past with the traditional form of financial advice. At some point in your life, I am sure you have invested in a pension plan, put money in an Individual Savings Account (ISA), or bought a form of life insurance. These are so important, as we all know that we need money to live and for that ‘rainy day’ pot, but this is the easy bit and the least exciting bit of what we do. To be honest, it is something many can now do on their own if they feel brave enough, via the internet. The really complicated bit is in the ‘why’ and ‘how much’?

Lifestyle Financial Planning is a holistic solution, a client can walk in to HarperLees asking for a pension plan to be shown they don’t need one at all, actually they should consider retiring early on what they already have and enjoy their lifestyle. You absolutely might need a pension plan but before getting carried away, let us consider why you need it, what do you want retirement to look like and therefore how much do you need to save...you could already have enough? For many clients, we have redefined retirement for them or allowed them to help their children onto the property ladder, rather than leaving inheritances until their children are in their 60s or 70s and no longer need the help. For some, their current position looks really comfortable, until you consider what happens if one income turns off overnight. We ask a lot of questions and dig deep to try and really understand you and what life means to you. What do you enjoy? What is most important to you? What would you do differently if life changed? We feed all of this detail, factual and informative, into our cashflow planning software which shows you visually what the finances look like i.e. if you carry on as you are today, do you have enough money to live the life you want to live, without the fear of running out of money? The important thing to remember is everyone’s plan is individual, what I

need for my planned future could be very different to what you might need. Once this bit is done, the magic really happens, not only do we explain what this means, but we stress test your plan, does it work if the worst happens? If the plan goes into a deficit, we discuss and work through where changes need to be made, do you need to save more or spend less? If you have a real surplus, what could you change? Could you retire earlier, give money with warm hands rather than cold ones, or just spend more?

Your financial plan will constantly evolve, we all know that life doesn't stand still and at points there will be hurdles in the way, but that is the beauty of having a Financial Planner by your side at all times, to readjust the plan, show you what the changes mean and coach you through any changes needed or decisions that need to be made.

At the heart of what we do is a simple idea...

- Having a great time
- Making a difference
- Helping people we like find out what they really want to do with their lives, and
- Living it in full, without the fear of ever running out of money.

It is never too late to have a really good check-up done, to enable us to provide a financial treatment plan no matter what the cause is. As the saying goes 'life isn't a rehearsal' let us help you really live it with the full backing of a financial plan that shows you that you can, and takes the stress out of it all for you.

Steph McDonald, HarperLees Website: www.harperlees.co.uk Tel: 01277 350560
 Email: steph@harperlees.co.uk

POST OFFICE

EVERY THURSDAY

AFTERNOON



SHALFORD

Village Hall 14.30

The George 15.00 –

15.30

CROSSWORD 90 SOLUTION – Robert Burrows																			
1	A	F	2	I	R	3	E		4	P	O	5	P	E	6	Y	E	7	D
	P			N			P			O			U		O				A
8	P	E	N	S	I	O	N					9	L	O	G	I	C		
	E		E		T		C			S			H				T		
10	N	O	R	T	H	S	H	O	E	B	U	R	Y						
	D				E		O						R					L	
		11	L	12	E	F	T	Y		13	I	14	R	A	T	E			
15	U		L						16	A		I						17	A
18	S	T	E	W		19	A	R	D	S	G	R	20	E	E	N			
	E		V		T			O		G			L			Y			
21	N	Y	A	L	A			22	R	A	I	N	B	O	W				
	E		T		L		E			N		O			A				
23	T	R	E	L	L	I	S				24	G	A	W	K	Y			



MEDIA RELEASE: Braintree Dog Day and Community Safety Day to be held in October

Braintree District Council will be hosting a Dog Day and Community Safety Day in Braintree as part of their latest Safer Streets Project. Back in August, Braintree District Council announced they had secured £138,619 from the Essex Police, Fire & Crime Commissioner's Office to help target crime and to reduce anti-social behaviour, neighbourhood crime and violence against women and girls in specified areas of Braintree.

Braintree Dog Day and Community Safety Day will take place on **Saturday 4 October** from 10am to 2pm in Weavers Park, opposite the council offices at Causeway House.

The Dog Day events are aimed at encouraging residents to join the Essex Police Dog Watch scheme and report criminal behaviour in their area. As dog walkers often walk in the same areas, they are likely to spot anything unusual, amiss, criminal damage or anti-social behaviour.

The event is free to attend and dogs are welcome, as well as information stalls from the council, police and other services there will also be dog themed stalls from local businesses.

The day will also include a fun dog show that attendees can take part in for free with categories including waggiest tail, golden oldie and dog the judge would most like to take home.

Cllr Mary Cunningham, Cabinet Member for Stronger Communities at Braintree District Council, said: *"This Braintree Dog Day will be a great opportunity for residents to find out more about the Safer Streets Project in Braintree and learn about Essex Police's Dog Watch scheme. This event provides a fun day out for all the family and a great opportunity for dog owners and dog lovers to meet each other and find out about what's available to them in the district."*

Previous events in Witham and Halstead have been well attended and anyone who registers on the Eventbrite page beforehand will get a free goody bag.

Register your attendance here: <https://www.eventbrite.co.uk/e/dog-day-braintree-tickets-1530251656899>



AUTUMN CRIME PREVENTION ADVICE



As I type this the mornings are certainly cooler with autumnal dew on car windows and fields which means we are coming to the end of summer, and autumn will soon be with us followed shortly by winter. Now is a good time to think about preparing for the autumn and winter months and all of our summer holidays are now a distant memory.

- Internal lights - 25/10/25 overnight the clocks go back, check and reset the time of your timer plugs, lights, and other security devices. **Remember to a thief a house in darkness is empty.** Some of the things you can do to create the illusion you are in when your home is unoccupied are: - lights on in rooms that you would normally occupy, TV simulators, a doorbell that you can answer remotely on your smartphone.
- External lighting and CCTV - Make sure that external lighting and CCTV is working and clean. To the front, lighting operated by a daylight sensor is best.
- Hedges, Trees and Plants - A consideration when gardening – most **thieves like to work unobserved.** Have your plants or shrubs grown and are they now obstructing CCTV or lighting, does it now prevent neighbours and passer-by's from seeing your frontage? If so, a spot of pruning would be advisable, to the front it is recommended to keep hedges and shrubs to about 4' (1.2m) and with trees, prune lower branches where suitable to allow that visibility of your property. Also clean your external cctv cameras removing spider webs, dust and dirt.
- Sheds and Gates - keep them closed and locked when not in use, review and maintain the locks/hinges as required. Alarms on sheds and outbuildings are a good idea.
- Property Marking - tools and lawn mowers going away for the winter, if you have not done it already make a note of the model and serial numbers and consider a property marking product.
- Heating Oil - with the value of fuel, it is worth considering its security. In the more isolated parts of the countryside it is primarily domestic properties that have been targeted by the heating oil thieves, but we have also seen such thefts at farms and other businesses. There are several security devices available that will protect your fuel supplies - details of which can be found via your fuel supplier or local plumber's merchant. One such system is Tank Commander www.commandersecurity.co.uk which has "Secured by Design" accreditation <https://www.securedbydesign.com/> Products like this will detect a dramatic drop in fuel and notify you by phone and/or audible alarm. There are also other similar security products that can add onto an existing intruder alarm system, whilst others may protect the filler cap and there are of course the conventional locks. Another consideration would be concealing it with landscaping and spiky planting around the tank, restricting access to it with gates or fencing, and where possible locating the tank under lighting in view of lived in rooms within the house.

If you would like further advice regarding security please look at the Essex Police website www.essex.police.uk/cp/crime-prevention/ and <https://www.securedbydesign.com/>

Look out for each other.

Terrie PCSO 8143 Braintree Neighbourhood Policing team

The George Inn

OPEN ALL DAY EVERY DAY

**Serving traditional Essex huffers
filled with our delicious
home-smoked meats**



**Opening Times: Sunday – Thursday 12-11 pm
Friday – Saturday 12 – midnight
Call us: 01371 850 207**

Find us on Facebook:



<https://www.facebook.co/thegeorgeinnshalford>

SHALFORD VILLAGE MAGAZINE BUSINESS DIRECTORY

Service	Company	Advert Page No.
Animal Feeds	Janus	28
Electrician	Hearn Electrical	32
Fencing	Bell Fencing	38
Fencing Supplies	Janus	28
Financial Planners	HarperLees	54
Funeral Directors	Daniel Robinson	2
Garage	Unit Four Motors	15
Glaziers	Capital Glaziers	32
Lock Smith	Christopher The Locksmith	45
Plumbing & Heating	Phil Burton	38
Pub	The George Inn	59
Roofing	Essex Roofing Services	32
Roofing	R Wheeler	28
Shop	Shalford Store	43
Water Softener	Ian Holmes	2
Websites • Print • Signs	Applied Image	43

Contacts

Alice Cox Editor

Tel: 07850 264518

Email: shalford_village_magazine@btinternet.com

Gary Thomas Applied Image Ltd

Long Meadow, 3 Jaspers Green, Braintree, Essex, CM7 5AU

Tel: 01376 342580

Email: support@appliedimage.co.uk